

Supporting Pupils Learning at Home: Online Learning Platforms

All pupils from Reception to Year 6 have access to a myriad of online learning resources via our school learning platforms.

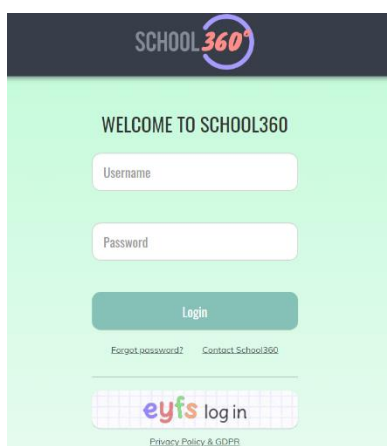
We use both School360 and Purple Mash. Instructions on how your child can login are below.

Go to our website: www.ellingham.northumberland.sch.uk

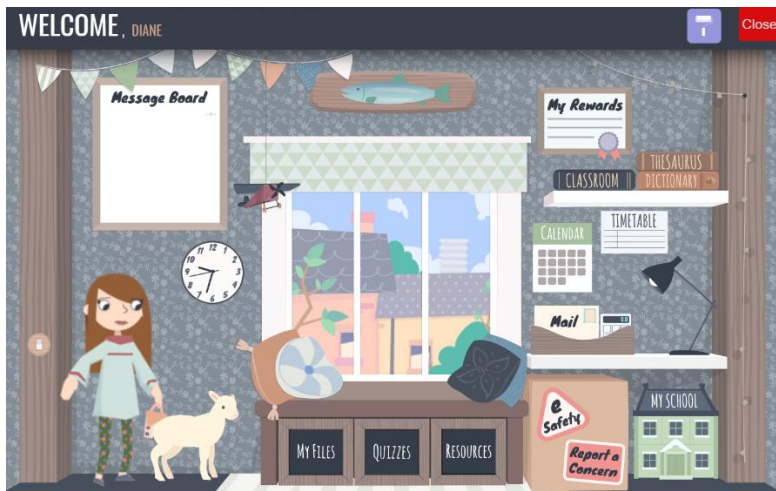


Click on pupils, then learning links, to get to the screen above.

If you click on the School 360 link, then the login screen will appear. Pupil in Reception use the EYFS login, all other pupils enter their user name, e.g. fred.bloggs, in the top box and their password, e.g. Legleg12, in the lower box, followed by clicking the login green box. Pupils have login details in their reading records, planners or homework books. All have been tested this week.



This then takes pupils to their own homepage. Depending on the age of your child, their homepage may look different.



The key areas to click on is 'Resources' – this is where Teachers may direct pupils to for specific tasks.

Teachers can put messages for pupils on the message board or screen.

This is where pupils can also explore a vast amount of other safe, educational resources.

To access Purple Mash, click on it from the Learning Links tab.



Ellingham Church of England
Primary School

Pupils then enter the same username and password as for School 360. This takes you to the pupil homepage. Teachers can set homework as a '2Do' or pupils can explore the sections below, apart from serial mash.

